

UWNTTEK

打造优秀的控制系统产品

优稳自动化

UWNTTEK
打造优秀的控制系统产品



浙江大学工业自动化
国家工程研究中心

杭州优稳自动化系统有限公司
HANGZHOU UWNTTEK AUTOMATION SYSTEM CO., LTD.



优质稳定

——打造最优秀的控制系统产品——

u/WireTech
工业软件平台

UW100™
工业网络应用

UW200™
工业网络应用

UW300™
安全主控系统

UW500

UW400

优质稳定 值得信赖

0571-88371966

0571-88371967

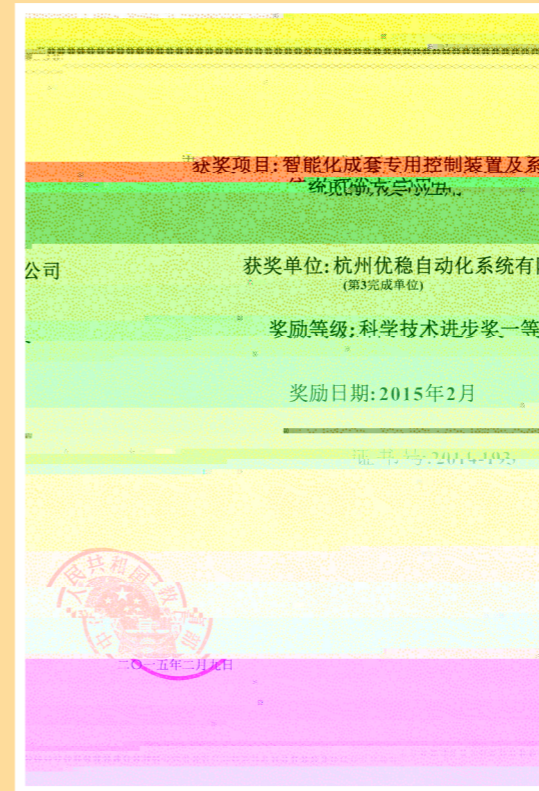
310013 310030

2014 “ ”

2015 1

2014

15



3000

1

1

4

2014 “ ”



2015 3 12

gongkong ”

2015 5 13 GE

”
” 2014 ”
”

NO.1

GE Proficy GE

GE

2014 ”

”
”

2015 5 22

16 ”

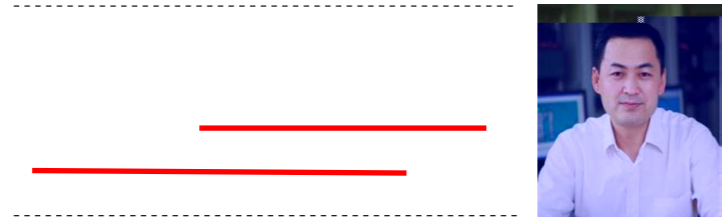
2013

2015 6 3

102.2

680 3000
1100 20
” ”

Expert Perspective I



Expert Perspective



21

2006 2

4.0

2014

24.4%

19.9%

V2.0

V1.0

+ V3.0

4.0

CPS

+

+

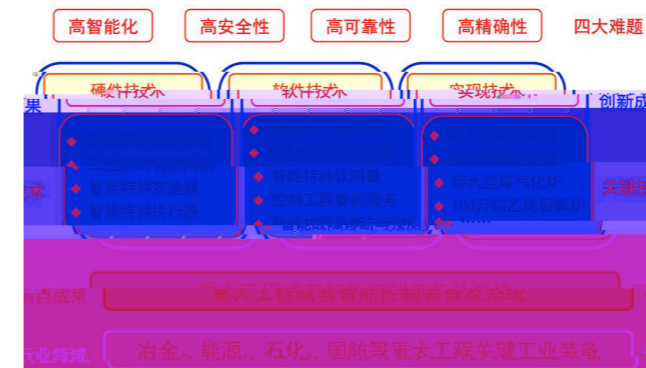
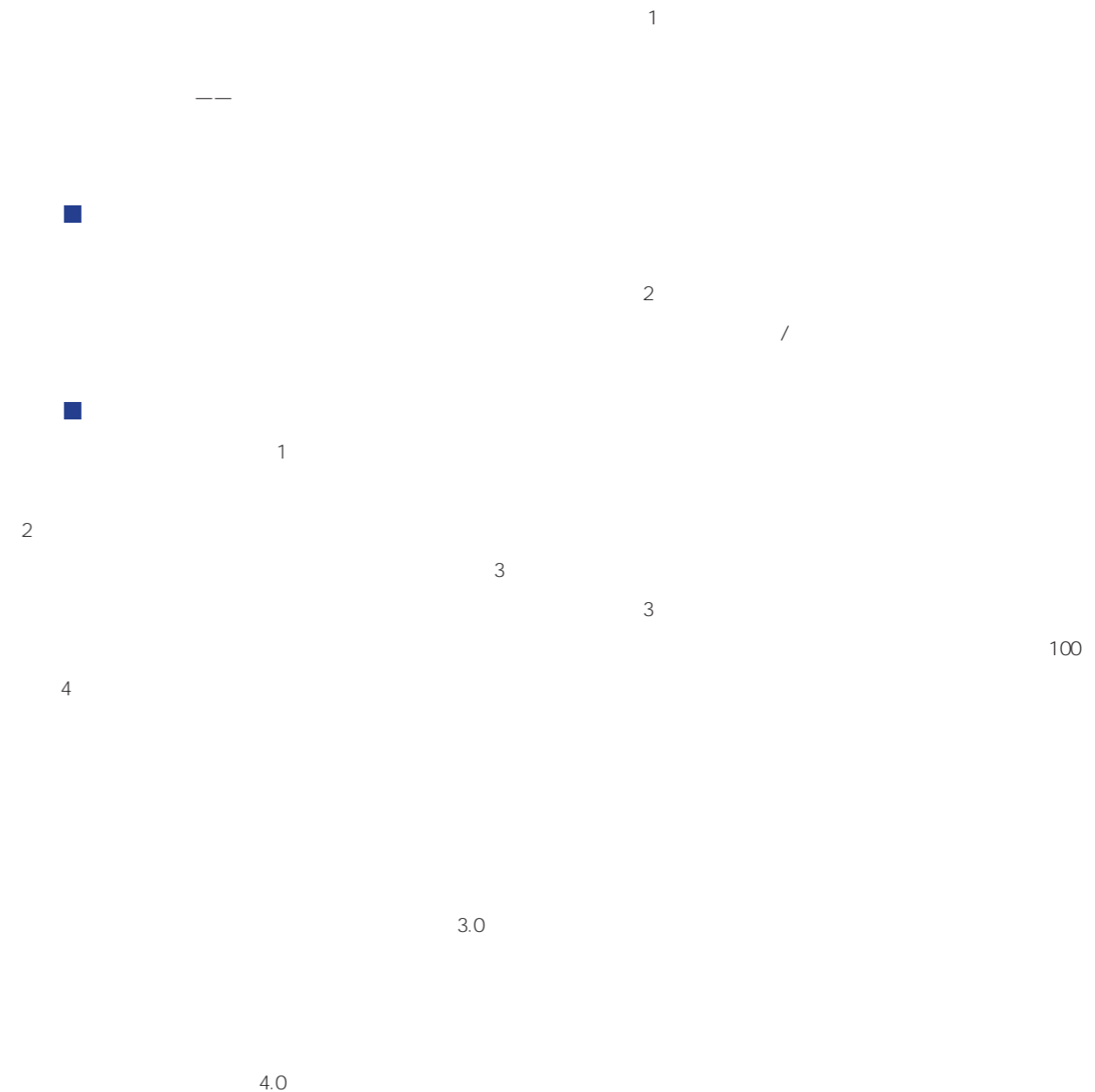
V4.0

2025

2025

IT

()
()
SCADA RTU PLC DCS IPC



UW2100

UWinTech

UW2100 Intelligent Controller

UWinUIC2100 Universal

863"

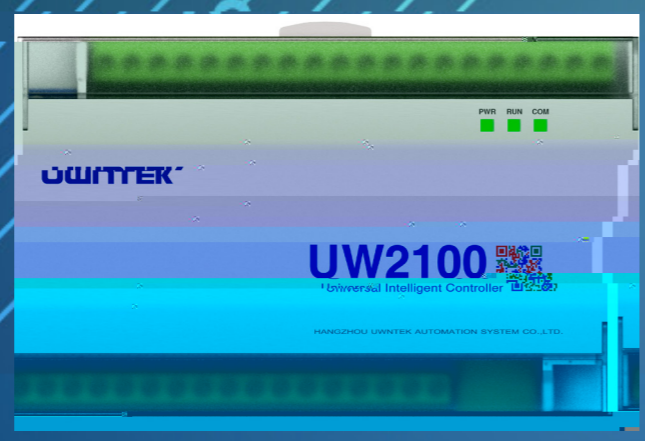
CPS

- 3 LED
- 2 RS485 MODBUS-RTU
- MODBUS-RTU

- 1 MODBUS-TCP
- 100Mbps
- 24VAC 24VDC

- UW2100
- FBD
- MODBUS RTU
- MODBUS TCP
- RTU
- GPRS
- MODBUS

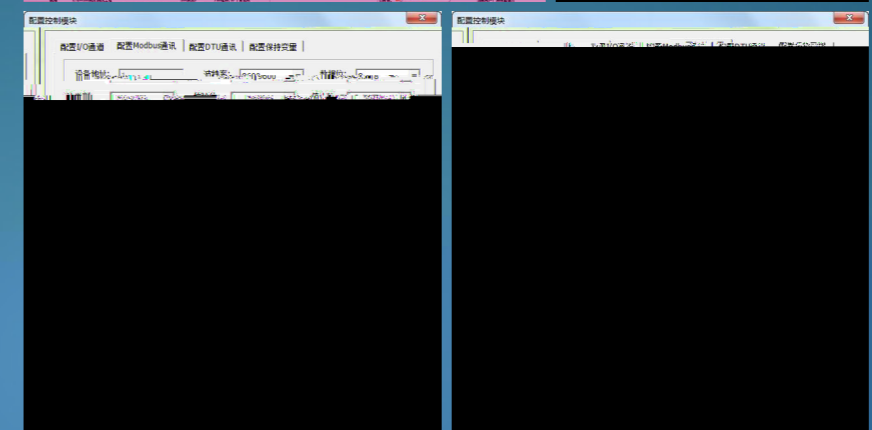
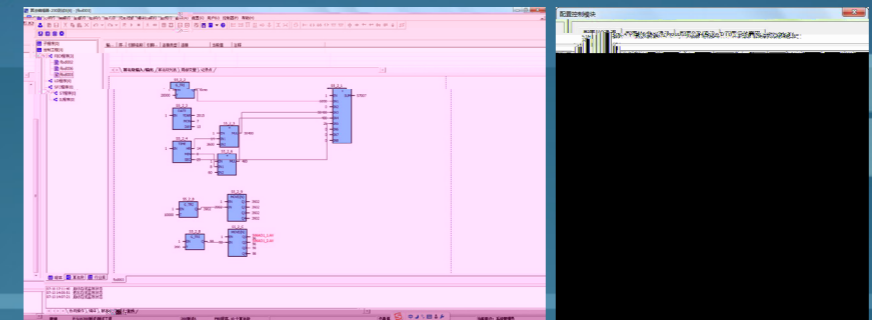
- UW2100
- IO
- 6 AI 2 AO
- 4 DI 4 DO 2 485 1
- 24V
- RTC



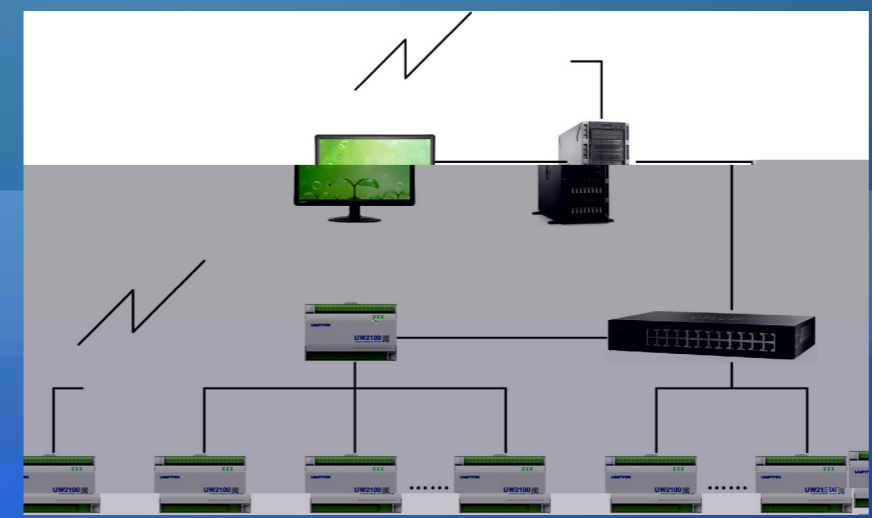
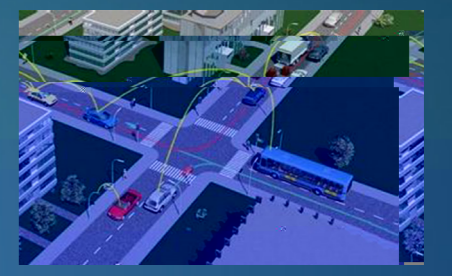
UWinTechPro UW200 UW500/UW600

- 6
- 0.2%
- 2 0-20mA
- 0.5%
- 4
- 4
- 1A/30VDC

- IEC61131-3
- MODBUS-RTU
- IEC61131-3 FBD



UW2100



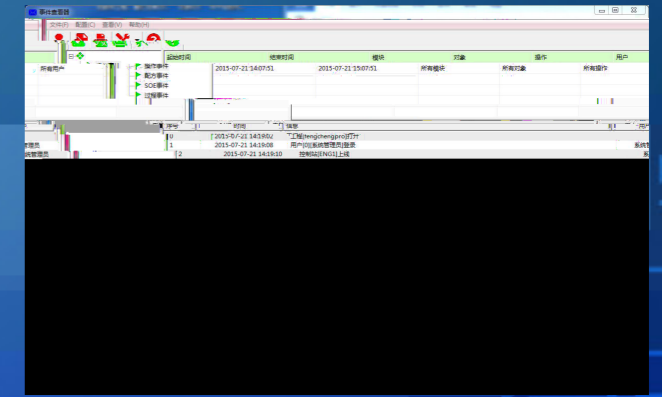
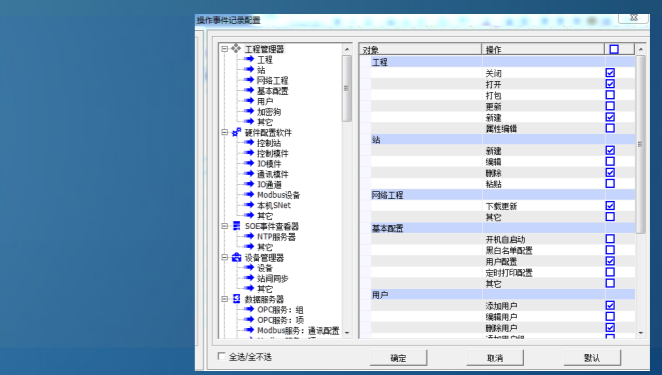
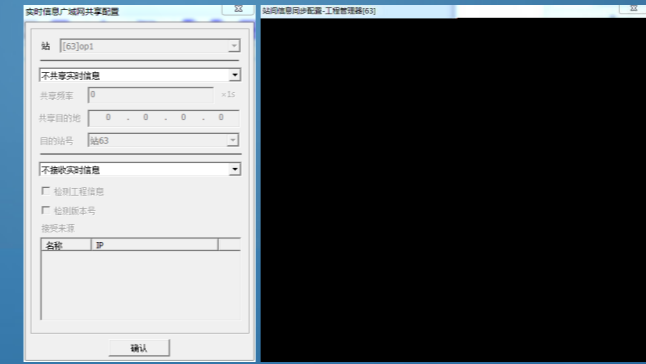
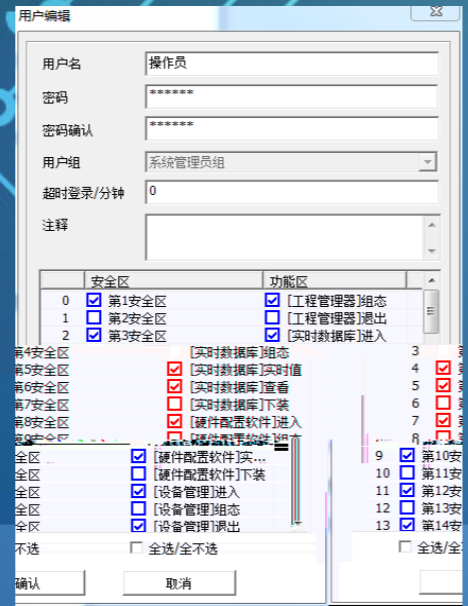
UW2100

UW500/UW600

UWinTech Pro1.0

SCADA supervisory control And Data Acquisition,

IT IT



UWinTech Pro1.0

UWinTech Pro1.0

PC IT

UW5131 Modbus



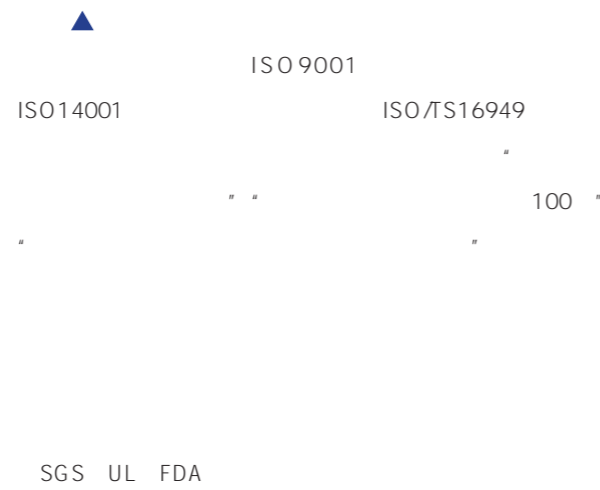
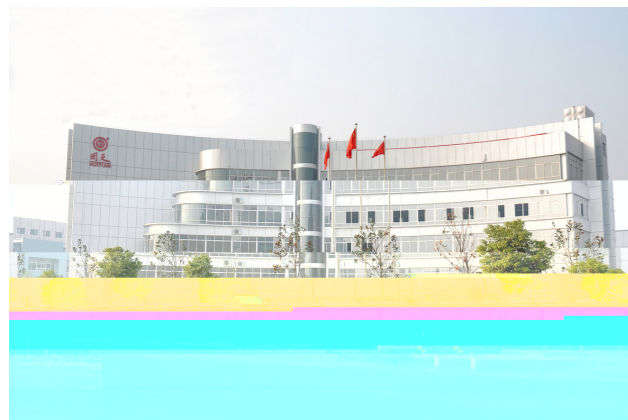
UW5131 Modbus
 Modbus RTU
 RS- 485
 UWinTech
 DC24V
 4 RS- 485
 32
 AI 1024
 AO 512
 DI 1024
 DO 1024
 256
 1km@4800bps
 1200-115200bps
 266mm× 81mm× 157mm
 2.5W
 - 20 ~60
 UW5174

Modbus
 Modbus RTU PLC
 RS- 485
 Modbus 0-32 32 <16
 Modbus 1-32
 Modbus 256
 RS- 485
 0.75mm
 RVSP 2*0.75 4 120
 RS- 485
 UW5131
 RS- 485
 UW5131 Modbus Modbus
 RTU RS- 485
 IO
 ABB ACS510- 01
 1 9600bps 8 1
 6 40002 40006 40009
 40010 40011 40012 Modbus 0001
 0005 0008 0009 0010 0011

UW5131 Modbus 4 RS- 485 4 RS- 485
 Modbus RTU 4 2 1:1 modbus 32 Modbus
 UW500 CNet 4 1 2
 RS- 485 ESD 1200-115200bps CNet

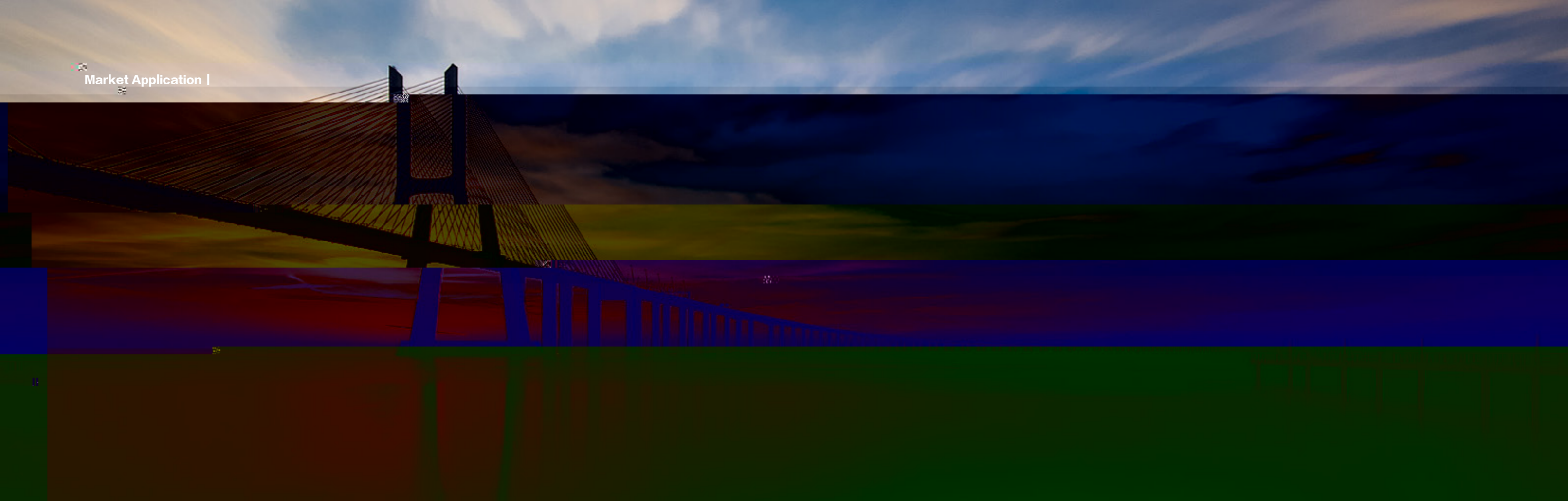
EXCELLENT AUTOMATION CONTROL SYSTEM HELP U WIN

UW500 DCS



UW500 DCS





2015 5

20

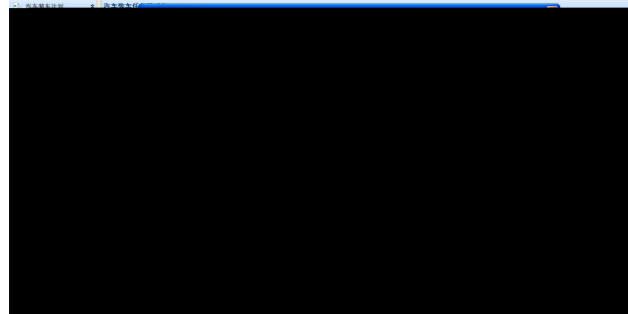
DCS

20

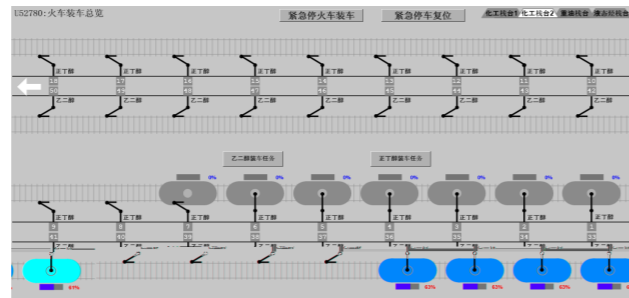
15 /

D®

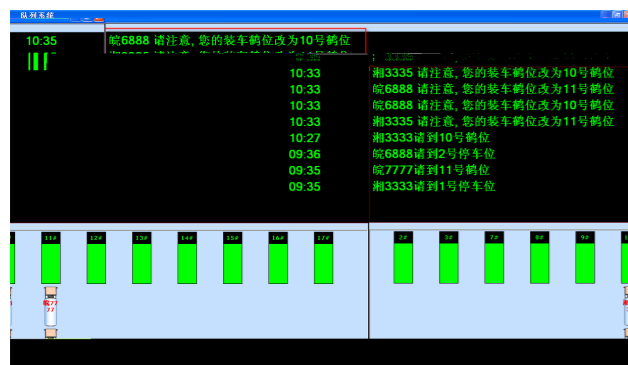
0



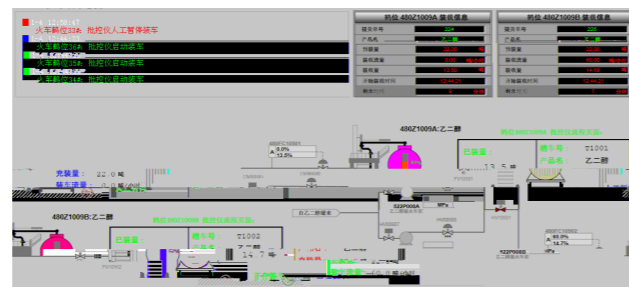
8



11



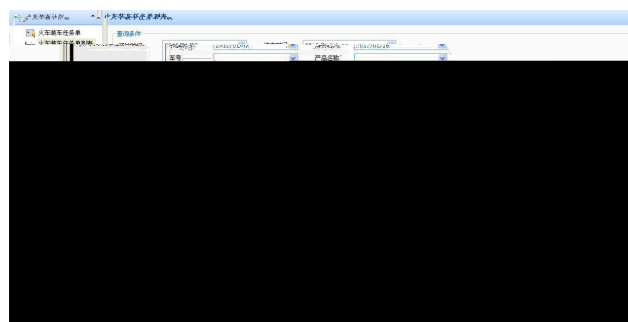
9



12

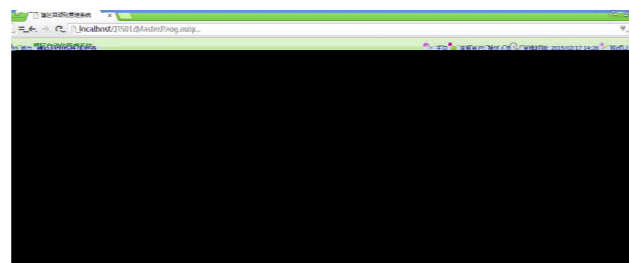
2.4

2



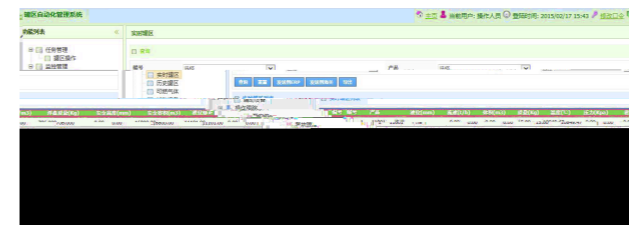
10

2.5

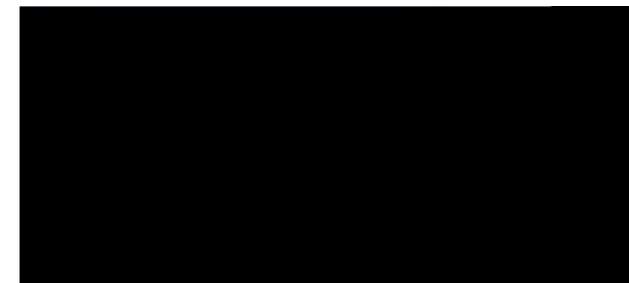


13

2.6



14

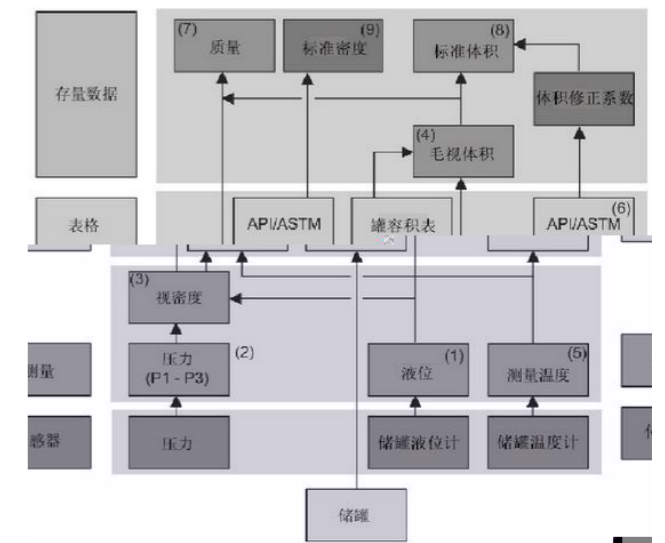


15

()

- >
- >
- >
- >
- >
- >
- >
- >

- >
- >
- >
- >
- >



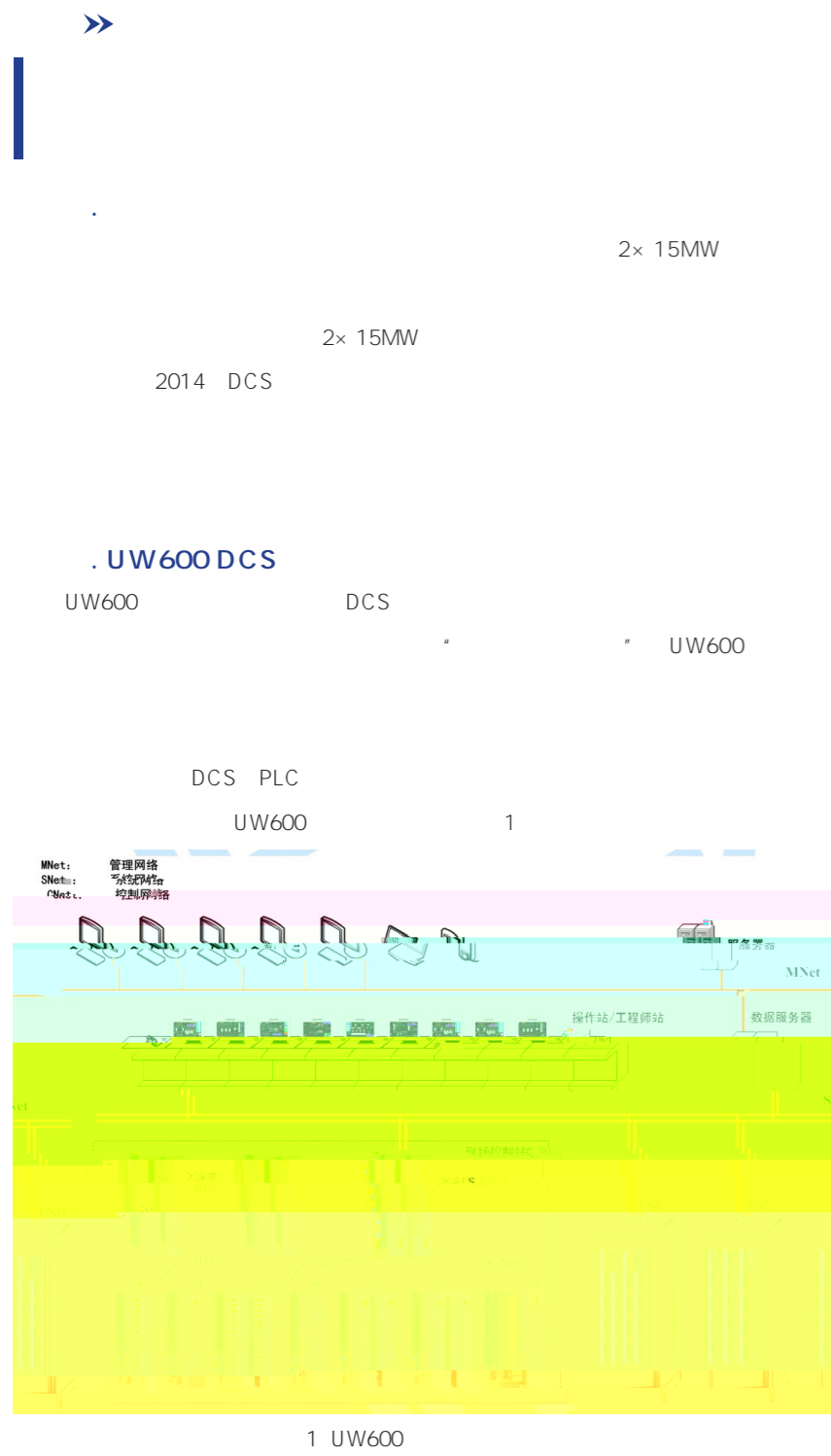
16

2.7

UW600



| | | | | | | | | |
|---|---|---|---|---|---|---|---|---|
| 1 | 2 | 3 | 4 | 5 | 6 | 7 | 8 | 9 |
|---|---|---|---|---|---|---|---|---|



3.1

DAS
 SCS
 MCS
 FSSS
 ETS
 R-IO
 SOE
 UW600 DCS
 MIS

4 1 5

3.2

3.2.1

75th
 3.85MPa

[1]

| | |
|---|---------|
| 1 | |
| | 75 th |
| | 5.3 MPa |
| | 485 |
| | 110 |
| | 1183 |

1

3.2.2

0 20th

2

DCS

2

20

PID

70%

PID
 PID
 PID
3.3 SOE
 UW600 SOE SOE

Industry Solution I

UW600
100mm 100mm
1ms

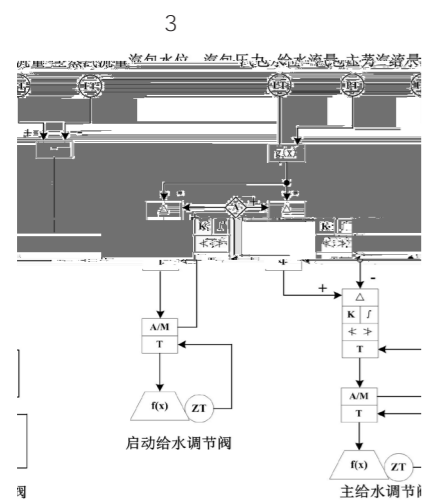
3.4

1
1ms
[2]

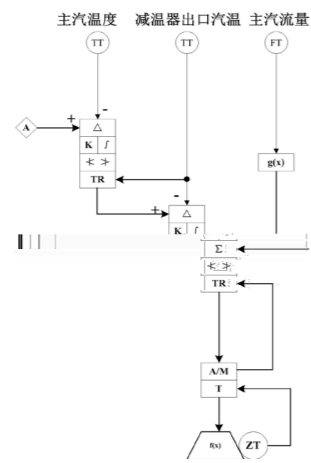
(20%)

3.5 MCS

MCS [2]
1



3

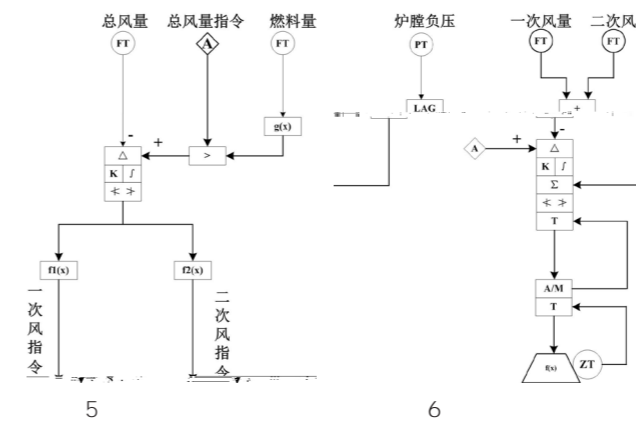


4

PID

5

Industry Solution



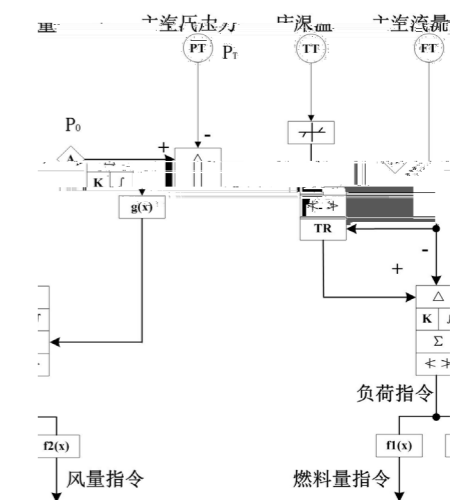
5

6

PID

6

5



7

UW600 30MW

2

| | | / | Mpa | t/h | MW | HZ |
|----|-------|-----|------|-----|------|----|
| 1 | 09:00 | 451 | 3.82 | 78 | 14.8 | 50 |
| 2 | 10:00 | 452 | 3.81 | 77 | 14.7 | 50 |
| 3 | 11:00 | 451 | 3.81 | 77 | 14.9 | 50 |
| 4 | 12:00 | 452 | 3.82 | 75 | 14.8 | 50 |
| 5 | 13:00 | 450 | 3.81 | 75 | 14.8 | 50 |
| 6 | 14:00 | 450 | 3.82 | 78 | 14.7 | 50 |
| 7 | 15:00 | 451 | 3.81 | 78 | 14.8 | 50 |
| 8 | 16:00 | 452 | 3.82 | 78 | 15 | 50 |
| 9 | 17:00 | 453 | 3.82 | 78 | 14.9 | 50 |
| 10 | 18:00 | 455 | 3.82 | 77 | 14.8 | 50 |
| 11 | 19:00 | 452 | 3.81 | 78 | 14.8 | 50 |

2

UW600 30MW

± 0.2MPa

± 4

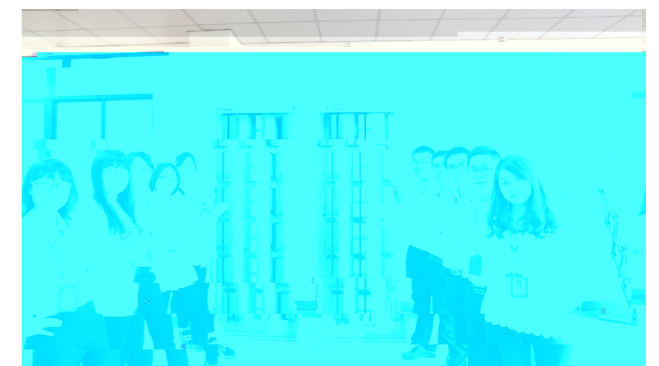
7

2015 5 8-10

2015

2015

2015



2015 6 24

8



: 33 6 2
: 024- 31085813
:024- 31085813

2015 3 6

7

B1- 1602



:
: 0 18171292680,18171295276
: 0571- 88371967

MBA

—MBA

900

A4

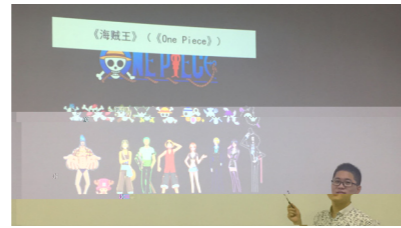
30X30

- 1. " "
- 2. " "
- 3. PPT PPT
- 4.

90

+ + + + + + + +

- 1. 2.
- 3.
- 1. 2. 3.
- 4.



- 1.
- 2.
- 3.

STAFF MIEN

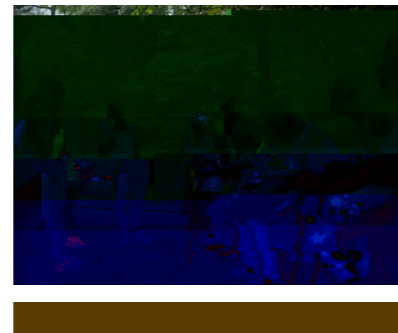
“志存高远我为峰，工控业内攀新高”

2015

5A
7 18 19
"
"



.....
1860
11km



2015年 (UW500) 值班表

\$" # GI ' ""

| | | | |
|--------|-----------------------|--------|-----------------------|
| 150316 | 2015.03.16—2015.03.20 | 150420 | 2015.04.20—2015.04.24 |
| 150601 | 2015.06.01—2015.06.05 | 150713 | 2015.07.13—2015.07.17 |
| 150824 | 2015.08.24—2015.08.28 | 151012 | 2015.10.12—2015.10.16 |
| 151123 | 2015.11.23—2015.11.27 | 151214 | 2015.12.14—2015.12.18 |

0571- 88371958 0571- 88371966 E - mail: cs@uwnetek.com

DCS

1 2000 / /

2

(Win7 32

| | 5 9:00AM | | 30H 17:00PM |
|-------------|-------------|----|----------------|
| | UW500 | IO | |
| 9 00—11 00 | | | |
| 13 00—17 00 | | | |
| | UW500 | | |
| 9 00—11 00 | | | |
| 13 00—17 00 | | | |
| | UWinTech | | |
| 9 00—11 00 | | | |
| 13 00—17 00 | | | |
| | UWinTech | | |
| 9 00—11 00 | | | |
| 13 00—17 00 | | | |
| 9 00—11 00 | | | |



| | | | | | |
|--------|--|----|--|--|--|
| | | | | | |
| | | | | | |
| | | | | | |
| | | | | | |
| E-mail | | QQ | | | |
| | | | | | |
| | | | | | |
| | | | | | |
| | | | | | |

